

NOTES:

1. INSTALLATION SHALL COMPLY WITH ALL APPLICABLE NATIONAL, STATE AND LOCAL ELECTRICAL REGULATIONS.
2. REFER TO PRODUCT DOCUMENTATION FOR ADDITIONAL DETAILS PRIOR TO INSTALLATION AND SITE PREPARATION WORK.
3. ALL DIMENSIONS ARE IN MILLIMETERS [INCHES].
- △ 4. CLEARANCE DIMENSIONS ARE MEANT FOR AIR FLOW AND SERVICES ACCESS ONLY. CONSULT WITH THE LOCAL SAFETY CODES AND STANDARDS FOR ADDITIONAL REQUIREMENTS IN YOUR AREA.
THE ROOM SHOULD BE VENTILATED TO PREVENT THE CONCENTRATION OF THE DIHYDROGEN GENERATED BY THE BATTERY CABINET.
RECOMMENDED MINIMUM AIRFLOW IS 2.41m³/h.
- △ 5. DIMENSION EXCLUDES SKIN AND SCREW PROJECTIONS.
6. THE WEIGHT OF THE UNIT IS 900 kg [1984 lb].
7. OPERATING TEMPERATURE: 0°C TO 40°C [32°F TO 104°F]
8. COLOR: RAL 9003 WHITE, GLOSS LEVEL 85%.
9. PROTECTION CLASS - IP20
- △ 10. THIS INFORMATION PROVIDES APPROXIMATE CENTER OF GRAVITY CALCULATION.
11. DOOR SWING: FREELY ROTATES BY 130°.
12. CABLE ENTRY IS FROM BOTTOM OF THE UNIT.

THIS DRAWING AND SPECIFICATIONS HEREIN ARE THE PROPERTY OF SCHNEIDER ELECTRIC AND SHALL NOT BE COPIED, REPRODUCED OR USED IN WHOLE OR IN PART, AS THE BASIS FOR THE MANUFACTURE OR SALE OF ITEMS WITHOUT WRITTEN PERMISSION FROM SCHNEIDER ELECTRIC. THIS DRAWING IS BASED UPON LATEST AVAILABLE INFORMATION AND IS SUBJECT TO CHANGE WITHOUT NOTICE.

Schneider
Electric

TITLE:
GALAXY VS
CLASSIC BATTERY CABINET - 700mm, IEC
WITH 36Nos. XP12-240 BATTERIES, CONFIG-C
GENERAL ARRANGEMENT

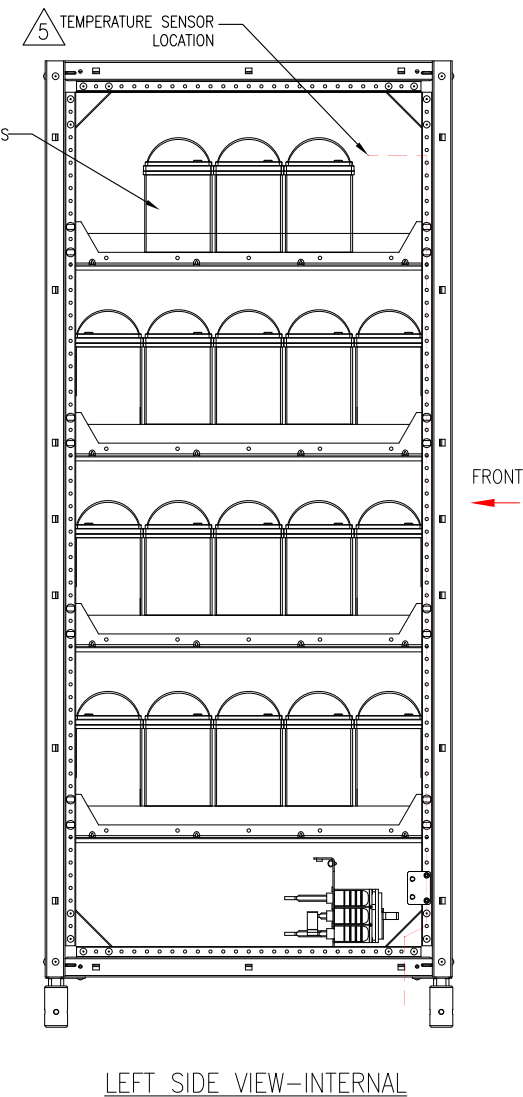
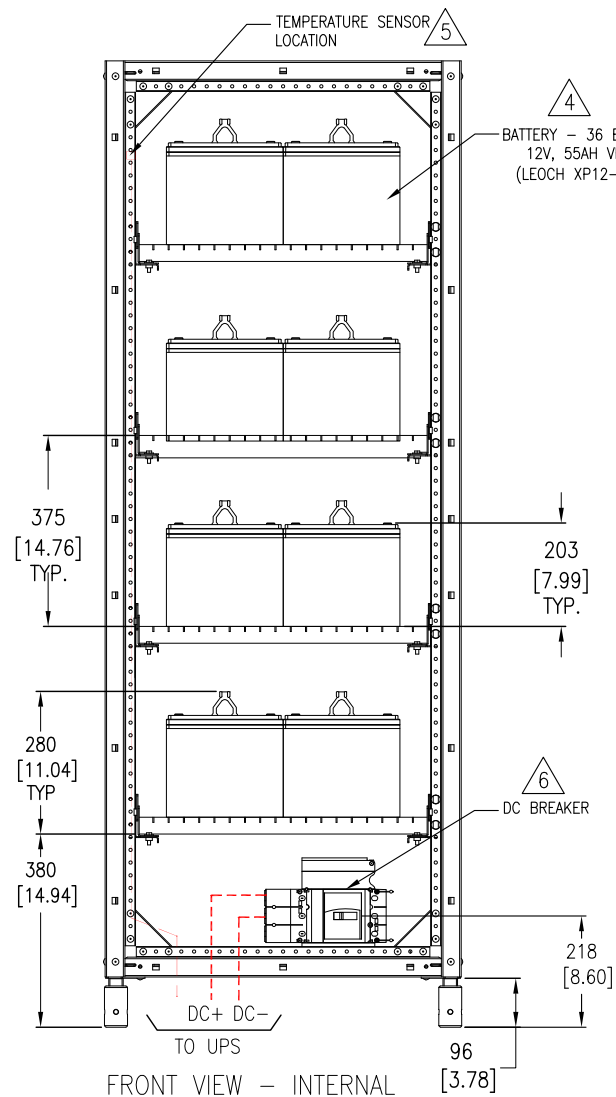
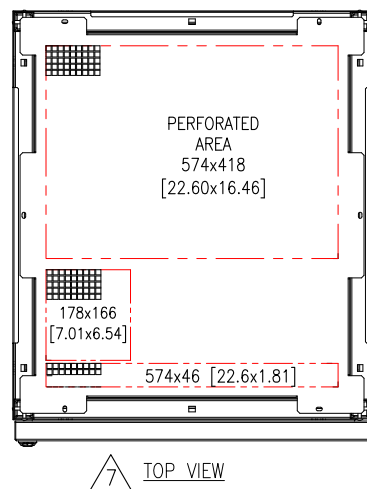
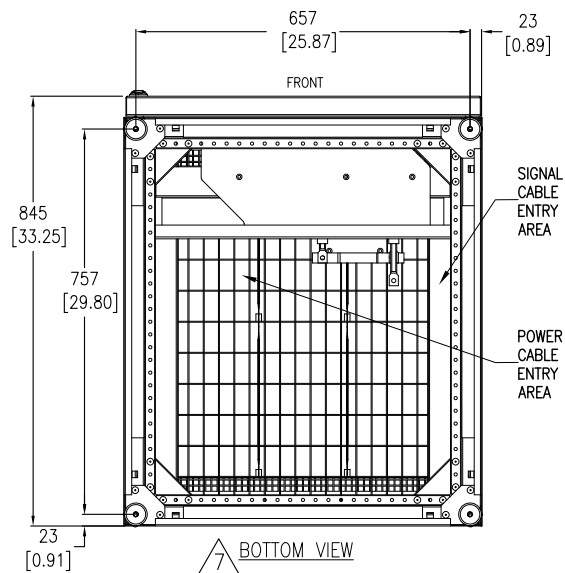
PROJECT: SUBMITTAL DRAWINGS SHEET 1 OF 3


DWG NO: GVSCBC7C

DRAWN:	BALA	9-FEB-21
ENGINEER:	S B	29-JUN-21
APPROVED:	S B	29-JUN-21

REV. 1

FIRST	ANGLE
PROJECTION	



	3 POLE DC BREAKER TRIP SETTING NSX250SDC (LV438218) + TM250G (LV430089)				
	UPS RATING (kW)	Ir(A) @ POWER FACTOR			Im(A) 625 (FIXED)
		0.8	0.9	1	
		20/30/40/50			
		60			
80					
100			250	NA	

NOTES:

1. INSTALLATION SHALL COMPLY WITH ALL APPLICABLE NATIONAL, STATE AND LOCAL ELECTRICAL REGULATIONS.
2. REFER TO PRODUCT DOCUMENTATION FOR ADDITIONAL DETAILS PRIOR TO INSTALLATION AND SITE PREPARATION WORK.
3. ALL DIMENSIONS ARE IN MILLIMETERS [INCHES].
- △4. BATTERIES SHOWN ARE TYPICAL.
- △5. ONE TEMPERATURE SENSOR IS PROVIDED WITH THE GVS SERIES UPS. CONTACT SCHNEIDER ELECTRIC IF ANOTHER IS REQUIRED.
- △6. REFER TO TABLE FOR BREAKER DETAILS.
- △7. DIMENSIONS OF CABINET MAY HAVE SOME VARIATIONS. PREVIOUS VERSION OF CABINET HAD DIMENSIONS OF 1970x700x830.

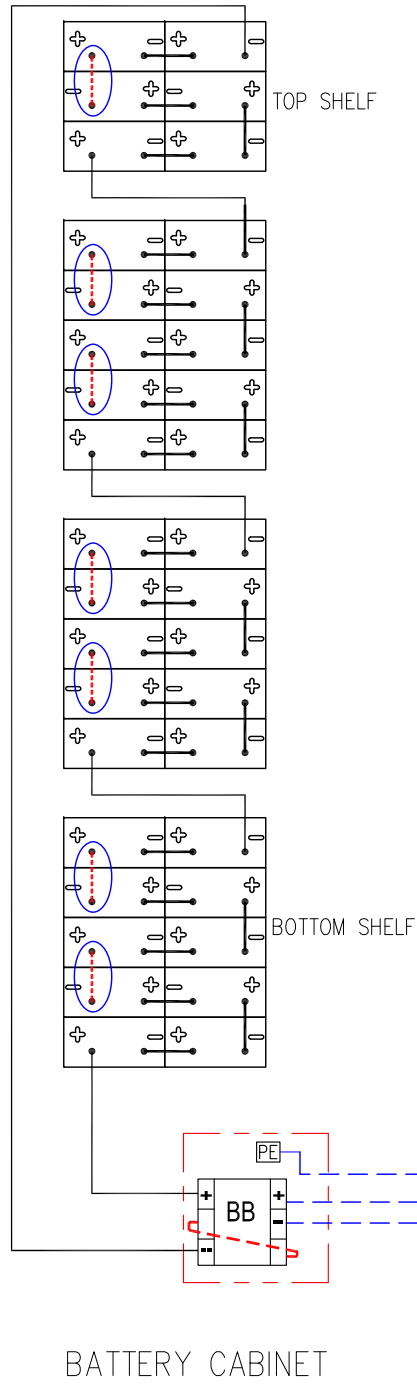
THIS DRAWING AND SPECIFICATIONS HEREIN ARE THE PROPERTY OF SCHNEIDER ELECTRIC AND SHALL NOT BE COPIED, REPRODUCED OR USED IN WHOLE OR IN PART, AS THE BASIS FOR THE MANUFACTURE OR SALE OF ITEMS WITHOUT WRITTEN PERMISSION FROM SCHNEIDER ELECTRIC. THIS DRAWING IS BASED UPON LATEST AVAILABLE INFORMATION AND IS SUBJECT TO CHANGE WITHOUT NOTICE.

Schneider Electric

TITLE:
GALAXY VS
CLASSIC BATTERY CABINET - 700mm, IEC
WITH 36Nos. XP12-240 BATTERIES, CONFIG-C
TOP, BOTTOM AND INTERNAL VIEWS
PROJECT: SUBMITTAL DRAWINGS SHEET 2 OF 3

DWG NO: **GVSCBC7C**
DRAWN: BALA
ENGINEER: S B
APPROVED: S B

REV. **1**
9-FEB-21
29-JUN-21
29-JUN-21
FIRST ANGLE PROJECTION



BATTERY RUNTIME DETAILS FOR GALAXY VS 400V UPS							
UPS RATING (kW)	SKU NUMBER	RUNTIME IN MINUTES					
		1 x GVSCBC7C			2 x GVSCBC7C		
		PF 0.8	PF 0.9	PF 1	PF 0.8	PF 0.9	PF 1
20	GVSUPS20KHS/ GVSUPS20KRHS	60.5	52.5	46.5	135.0	115.0	105.0
30	GVSUPS30KHS/ GVSUPS30KRHS	37.0	32.0	28.5	85.0	74.0	65.5
40	GVSUPS40KHS/ GVSUPS40KRHS	26.0	22.5	19.5	60.5	52.5	46.5
50	GVSUPS50KHS/ GVSUPS50KRHS	19.5	17.0	14.5	46.5	40.0	35.5
60	GVSUPS60KHS/ GVSUPS60KRHS	15.5	13.0	11.5	37.0	32.0	28.5
80	GVSUPS80KHS/ GVSUPS80KRHS	10.5	8.9	7.6	26.0	22.5	19.5
100	GVSUPS100KHS/ GVSUPS100KRHS	7.6	6.3	5.3	19.5	17.0	14.5
120	GVSUPS120KHS/ GVSUPS120KRHS	N A			15.5	13.0	11.5
150	GVSUPS150KHS/ GVSUPS150KRHS				11.5	9.7	8.4

LEGEND:

- AND HIGHLIGHTED BY ○ CONNECTED ON SITE
- CONNECTED IN FACTORY

NOTES:

1. INSTALLATION SHALL COMPLY WITH ALL APPLICABLE NATIONAL, STATE AND LOCAL ELECTRICAL REGULATIONS.
2. REFER TO PRODUCT DOCUMENTATION FOR ADDITIONAL DETAILS PRIOR TO INSTALLATION AND SITE PREPARATION WORK.
3. TORQUE FOR SCREWS TO CONNECT BATTERIES IS 11NM.
4. EARTHING IS ESSENTIAL BEFORE STARTUP.
5. CABLE CONNECTION ON BATTERY TERMINALS MUST BE COVERED WITH PLASTIC CAPS.
6. THE GROUND CONNECTION TO THE CLASSIC BATTERY CABINET MUST BE MADE DIRECTLY FROM THE UPS CABINET.
7. MAXIMUM ALLOWABLE DISTANCE BETWEEN BATTERY CABINET AND UPS IS 200Meters [656Feet]. FOR CABLE SPECIFICATION, REFER TO INSTALLATION MANUAL.
8. BATTERY TYPE: XP12-240, 36 BLOCKS.
9. FOR INTERFACE DETAILS REFER TO SYSTEM WIRING DIAGRAM GVSUPS20K150HS-WD.

THIS DRAWING AND SPECIFICATIONS HEREIN ARE THE PROPERTY OF SCHNEIDER ELECTRIC AND SHALL NOT BE COPIED, REPRODUCED OR USED IN WHOLE OR IN PART, AS THE BASIS FOR THE MANUFACTURE OR SALE OF ITEMS WITHOUT WRITTEN PERMISSION FROM SCHNEIDER ELECTRIC. THIS DRAWING IS BASED UPON LATEST AVAILABLE INFORMATION AND IS SUBJECT TO CHANGE WITHOUT NOTICE.

Schneider Electric

TITLE: GALAXY VS
CLASSIC BATTERY CABINET - 700mm, IEC
WITH 36Nos. XP12-240 BATTERIES, CONFIG-C
CABLING DIAGRAM & RUNTIME DETAILS

PROJECT: SUBMITTAL DRAWINGS SHEET 3 OF 3

DWG NO: GVSCBC7C

REV. 1

DRAWN: BALA 9-FEB-21 ANGLE PROJECTION

ENGINEER: S B 29-JUN-21 N.A

APPROVED: S B 29-JUN-21